

430 JAMB
 SERIES: 450X
 CASEMENT IN
 4-BAR ARMS

431 JAMB
 SERIES: 450X
 CASEMENT IN

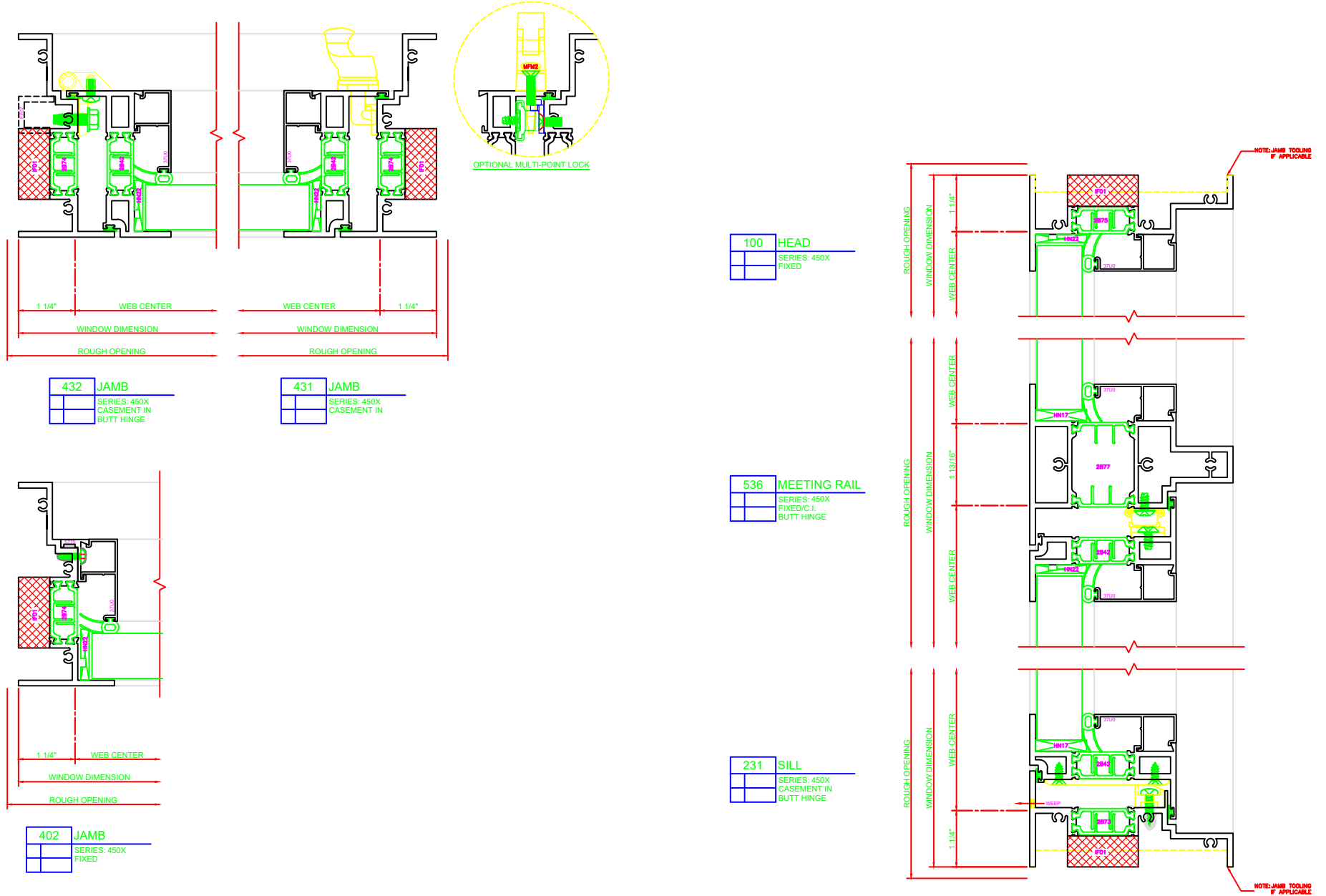
100 HEAD
 SERIES: 450X
 FIXED

532 MEETING RAIL
 SERIES: 450X
 CASEMENT IN
 4-BAR ARMS

230 SILL
 SERIES: 450X
 CASEMENT IN
 4-BAR ARMS

4-BAR ARMS BUTT HINGE

13 = ERECTOR NOTE:
 THE HINGED JAMB FRAME SHALL BE
 INSTALLED PLUMB. ALL HINGES SHALL
 BE SECURELY BLOCKED AND
 ANCHORED TO THE CONDITION
 THROUGH THE HINGES OR AS CLOSE
 AS POSSIBLE TO THE HINGES.



432 JAMB
 SERIES: 450X
 CASEMENT IN
 BUTT HINGE

431 JAMB
 SERIES: 450X
 CASEMENT IN

100 HEAD
 SERIES: 450X
 FIXED

536 MEETING RAIL
 SERIES: 450X
 FIXED (I)
 BUTT HINGE

231 SILL
 SERIES: 450X
 CASEMENT IN
 BUTT HINGE

402 JAMB
 SERIES: 450X
 FIXED